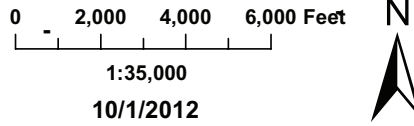


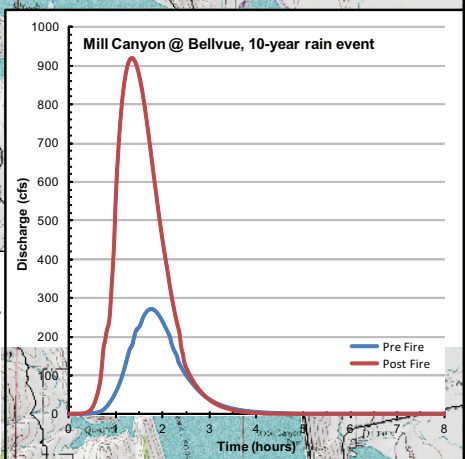
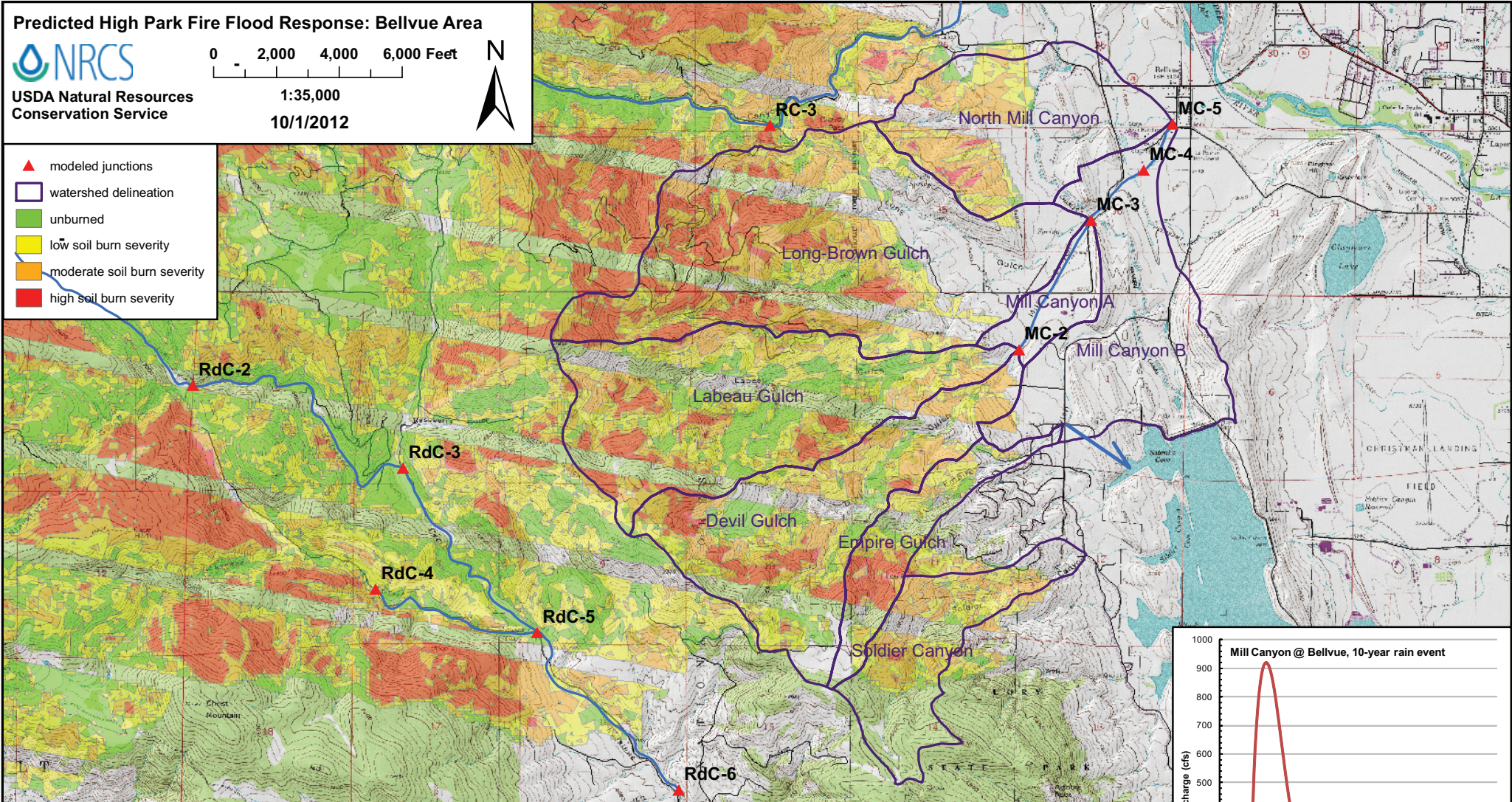
Predicted High Park Fire Flood Response: Bellvue Area



USDA Natural Resources Conservation Service



- ▲ modeled junctions
- watershed delineation
- unburned
- low soil burn severity
- moderate soil burn severity
- high soil burn severity



Junction or Catchment	Drainage Area (mi ²)	2-Year Rain Event (0.8 inches)				10-Year Rain Event (1.5 inches)				25-Year Rain Event (1.8 inches)				50-Year Rain Event (2.2 inches)				100-Year Rain Event (2.4 inches)			
		Predicted Flow (cfs) Pre Fire	Post Fire	Peak Flow	Sed. Bulking Flow (cfs)	Predicted Flow (cfs) Pre Fire	Post Fire	Peak Flow	Sed. Bulking Flow (cfs)	Predicted Flow (cfs) Pre Fire	Post Fire	Peak Flow	Sed. Bulking Flow (cfs)	Predicted Flow (cfs) Pre Fire	Post Fire	Peak Flow	Sed. Bulking Flow (cfs)	Predicted Flow (cfs) Pre Fire	Post Fire	Peak Flow	Sed. Bulking Flow (cfs)
MC-2	3.33	0	38	n/a	42	120	430	3.6	470	250	690	2.8	760	480	1100	2.3	1200	610	1300	2.2	1500
Long-Brown Gulch	2.64	0	43	n/a	54	110	380	3.6	470	210	600	2.8	750	390	930	2.4	1200	500	1100	2.2	1400
MC-3	5.97	0	74	n/a	81	220	810	3.6	890	460	1300	2.8	1400	880	2100	2.3	2300	1100	2500	2.2	2700
MC-4	6.97	0	74	n/a	81	240	830	3.4	910	520	1400	2.6	1500	1000	2200	2.2	2400	1300	2600	2.0	2900
North Mill Canyon	1.13	0	2.2	n/a	2.4	39	93	2.4	100	62	160	2.0	180	160	270	1.7	300	200	340	1.7	370
MC-5	6.61	0	76	n/a	84	270	920	3.4	1000	590	1600	2.6	1700	1200	2400	2.1	2700	1500	3000	2.0	3300
Empire Gulch	0.48	0	7.0	n/a	7.7	27	72	2.7	79	52	120	2.3	130	94	190	2.0	210	120	230	1.9	250
Soldier Canyon	0.74	0	8.1	n/a	8.9	46	100	2.2	110	87	170	1.9	180	160	270	1.8	300	200	330	1.7	370